

NOT FOR CONSTRUCTION

STUDIO V  
ARCHITECTURE

NO. 14001

Metropolis Tower  
270 Marin Blvd  
Jersey City, NJ 07302  
Block No. 13101, Lots No. 1, 2

OWNER / CLIENT

Metropolis Towers Apt. Corp.  
31-19 37th Avenue, Suite 500  
Long Island City, NY 11101

ARCHITECT

STUDIO V ARCHITECTURE, PLLC  
44 E 32nd Street New York NY 10016  
T 212.779.2288 F 212.689.1325

CONSULTANTS

GEOTECHNICAL/CIVIL ENGINEER/  
LANDSCAPE ARCHITECT  
Langan Engineering  
300 Kimball Drive, 4th Floor  
Parsippany, NJ 07054-2172  
T 973.560.4900

LAND USE ATTORNEY  
Donald M. Pope  
Scarinci Hollenbeck  
802 West Park Avenue, Suite 222  
Ocean, NJ 07712  
T 732.786.5590

REVISIONS

DATE: 06.10.16  
DRAWN BY: ###  
CHECKED BY: G.V.

SHEET TITLE

FULL BUILD OUT GROUND  
FLOOR PLAN PHASE 1

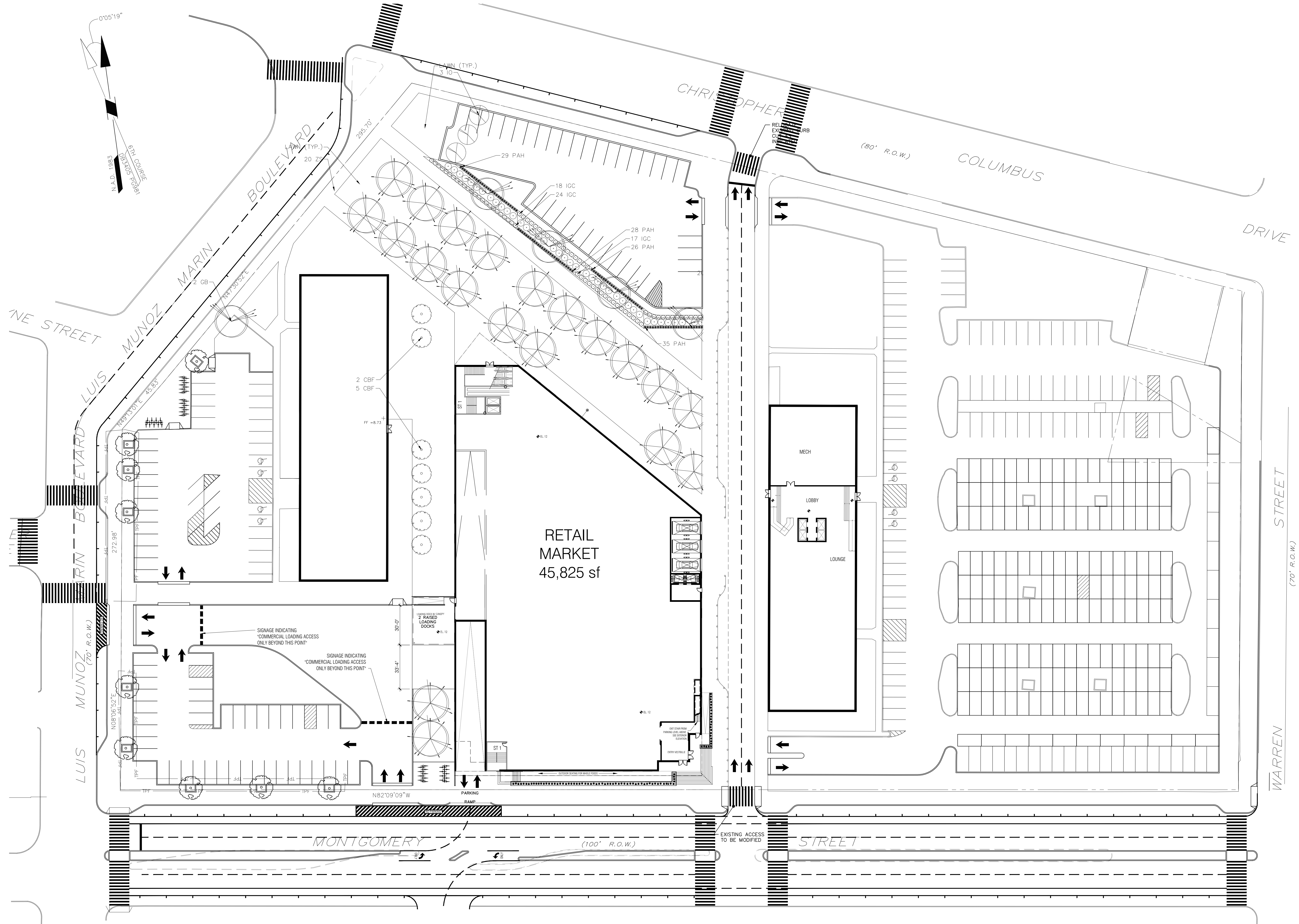
SCALE

1/8"=1'-0"

SHEET NO.

A-101A

# of 45



1 PHASE 1 SITE PLAN - GROUND FLOOR  
1/30" = 1'-0"

All text, design, arrangements and plans indicated or represented by this drawing are owned by, and are the property of STUDIO V Architecture, PLLC, and were created, arranged, and developed for use by, and in connection with the specified project. None of such text, design, arrangements or plans shall be used by or disclosed to any person, firm or corporation for any purpose whatsoever without the written permission of STUDIO V Architecture, PLLC. Written consent on this drawing shall have precedence over scaled dimensions. Contractors shall verify, and be responsible for all dimensions and conditions to the field site must verify STUDIO V Architecture, PLLC, of any deviation from dimensions and conditions depicted in these drawings. © 2016 STUDIO V Architecture, PLLC. All rights reserved.

STUDIO V  
ARCHITECTURE

NO. 14001

Metropolis Tower  
270 Marin Blvd  
Jersey City, NJ 07302  
Block No. 13101, Lots No. 1, 2

OWNER / CLIENT

Metropolis Towers Apt. Corp.  
31-19 37th Avenue, Suite 500  
Long Island City, NY 11101

ARCHITECT

STUDIO V ARCHITECTURE, PLLC  
44 E 32nd Street New York NY 10016  
T 212.779.2288 F 212.689.1325

CONSULTANTS

GEOTECHNICAL/CIVIL ENGINEER/  
LANDSCAPE ARCHITECT  
Langan Engineering  
300 Kimball Drive, 4th Floor  
Parsippany, NJ 07054-2172  
T 973.560.4900

LAND USE ATTORNEY  
Donald M. Pope  
Scarinci Hollenbeck  
802 West Park Avenue, Suite 222  
Ocean, NJ 07712  
T 732.786.5590

REVISIONS

DATE: 06.10.16  
DRAWN BY: G.W.  
CHECKED BY: G.V.

SHEET TITLE

FULL BUILD OUT  
GROUND PLAN PHASE  
2

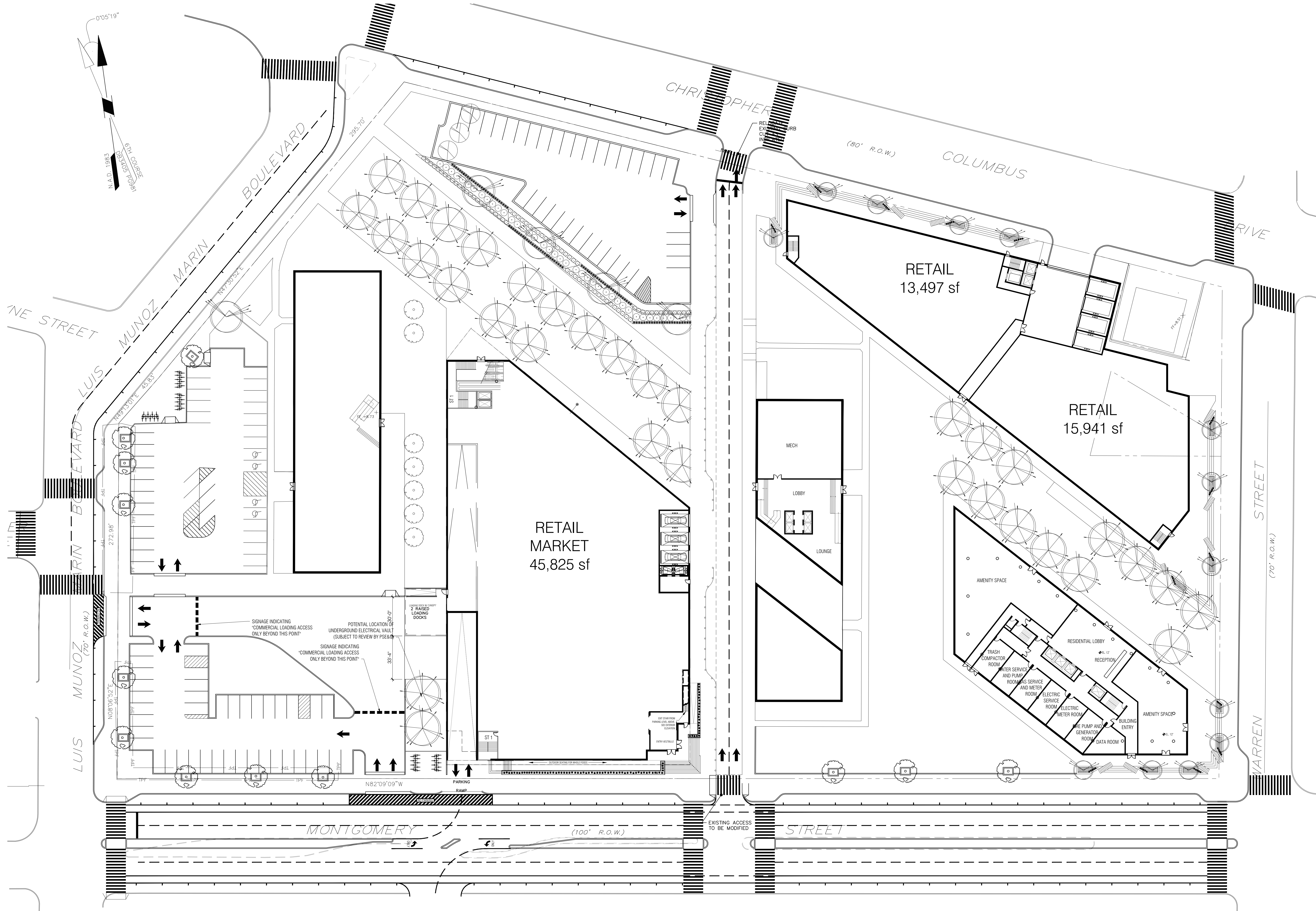
SCALE

1/30"=1'-0"

SHEET NO.

A-101

04 of 45



1 SITE PLAN - GROUND FLOOR  
1/30" = 1'-0"

NOT FOR CONSTRUCTION

STUDIO V  
ARCHITECTURE

NO. 14001

Metropolis Tower  
270 Marin Blvd  
Jersey City, NJ 07302  
Block No. 13101, Lots No. 1, 2

OWNER / CLIENT

Metropolis Towers Apt. Corp.  
31-19 37th Avenue, Suite 500  
Long Island City, NY 11101

ARCHITECT

STUDIO V ARCHITECTURE, PLLC  
44 E 32nd Street New York NY 10016  
T 212.779.2288 F 212.689.1325

CONSULTANTS

GEOTECHNICAL/CIVIL ENGINEER/  
LANDSCAPE ARCHITECT  
Langan Engineering  
300 Kimball Drive, 4th Floor  
Parsippany, NJ 07054-2172  
T 973.560.4900

LAND USE ATTORNEY  
Donald M. Pope  
Scarinci Hollenbeck  
802 West Park Avenue, Suite 222  
Ocean, NJ 07712  
T 732.786.5590

REVISIONS

DATE: 06.10.16

DRAWN BY: GF

CHECKED BY: G.V.

SHEET TITLE

PHASE 1 ELEVATIONS  
NORTH AND SOUTH

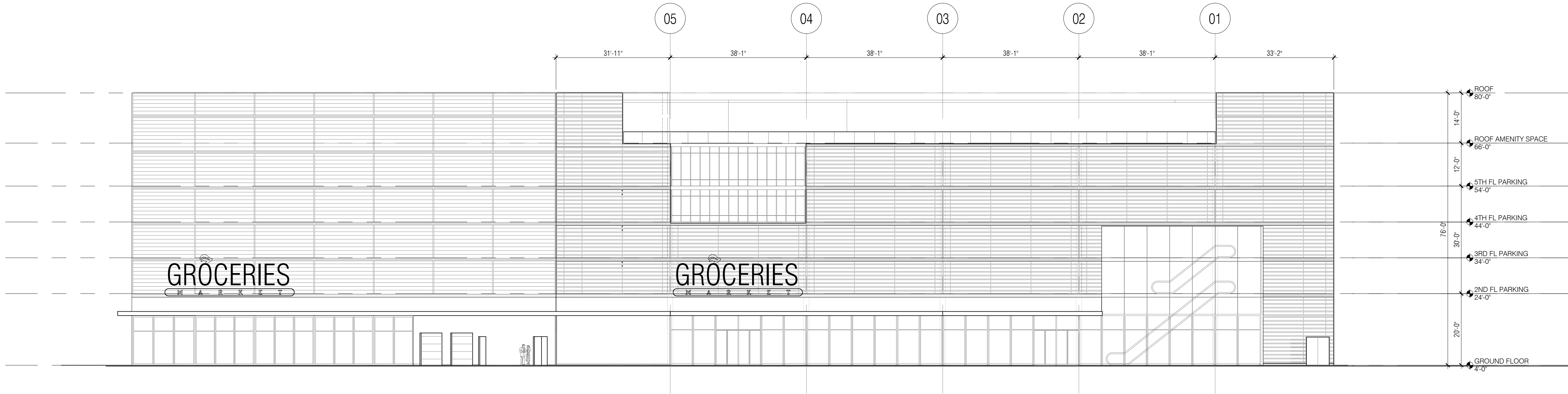
SCALE

1/16"=1'-0"

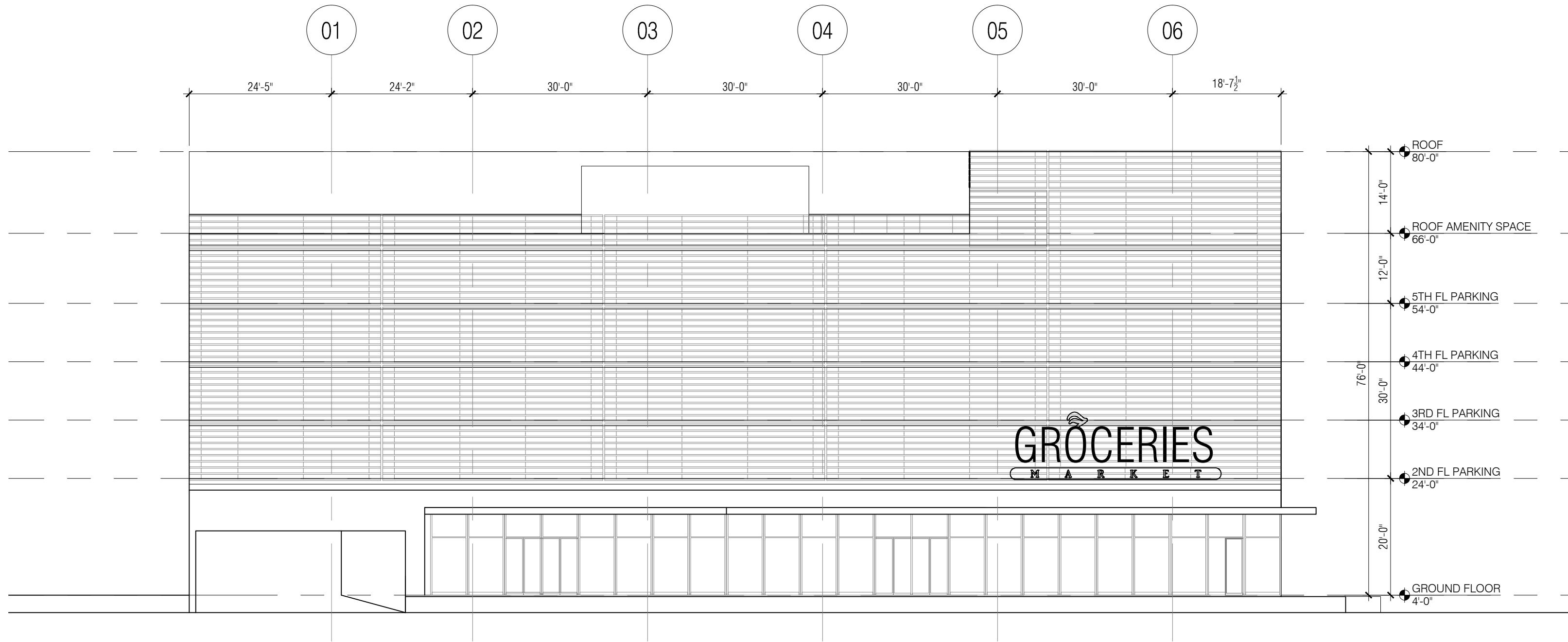
SHEET NO.

A1-210

21 of 45



2 PHASE 1 NORTH ELEVATION  
1/16" = 1'-0"



1 PHASE 1 SOUTH ELEVATION  
1/16" = 1'-0"



